



January Newsletter

Employee Spotlight



The Planning and Operations Team is excited to welcome Shaun Wolfel as our new Access Control Coordinator. Shaun has 15 years of experience working at the Main Campus in Tucson and is eager to join the team due to the amazing things happening here at Phoenix Biomedical. His background is

diverse including food services, retail, security and human resources. With him, Shaun brings leadership skills and a desire to collaborate with hopes of helping wherever he can. He keeps busy while away from work with his three kids, so he tries to squeeze in some fishing whenever possible. Shaun is excited to spend more time on his pontoon boat at the nearby lakes as soon as the weather warms up.

Parking & Transportation

Cat Wheels Bike Share Program



The Cat Wheels Bike Program is a Parking & Transportation initiative designed to provide a free bicycle loan system for Phoenix Biomedical Campus. The program is developed to help students and staff move around campus in a quick, safe, and sustainable fashion. Seven bikes are available, from single-speed cruisers to seven-speeds, and come with a U-lock and a set of attachable bike lights. You can check out a bike for up to a week! To sign-up for the Cat Wheels program, bring your PBC access card to one of our check-out locations:

Check-out Locations: Monday - Friday (**Beginning February 5th**)

- Basement of Building 1: 8 a.m. - 11 a.m. and 2 p.m. - 4 p.m.
- Front desk of HSEB (next to security): 11 a.m. - 1 p.m.

The first time you check out a bike, the parking coordinator will ask you to read and sign a liability form. All subsequent check-outs will require your PBC access card only. For more information visit our website at parking.arizona.edu/phoenix/

Stay tuned for information about Zipcar coming to our campus!

Valley Metro

The University of Arizona's Parking & Transportation Services, supports alternative transportation by providing subsidized U-Pass transit passes for the Valley Metro bus and light rail system. We ask that you please consider the use of mass transit methods as a cost-effective and convenient travel option. Doing so will lessen the amount of time you spend in traffic, decrease your vehicle emissions, and reduce the parking demand on campus.

Riding with Valley Metro - Phoenix Biomedical Campus students and employees are eligible to purchase subsidized transit passes for unlimited rides on Valley Metro light rail and bus routes. The Valley Metro bus service is available across Maricopa County, with over 100 different lines operating throughout the day. Light Rail will connect seamlessly with the Valley Metro regional bus system. For trip planning assistance, transit schedules and maps, please visit www.valleymetro.org **For Transit Pass Options please see the chart below.** Bus Pass Renewal & New Requests

To renew, or request a Valley Metro bus pass, visit our parking portal at: <https://arizona.t2hosted.com/Account/Portal> and click on "Get Permits." Follow the purchase prompts. Your receipt will provide instructions on how to obtain your card.

TRANSIT PASS OPTIONS

EMPLOYEE 07/01 - 06/30	SUBSIDIZED	FULL FARE
Express/Rapid Platinum	\$632	\$1264
Local Platinum	\$384	\$768

STUDENT	SUBSIDIZED	FULL FARE
Academic Year 8/16/19 - 5/15/20	\$100	\$200
Summer 5/13/19 - 8/12/19	\$77	\$154

Campus Updates

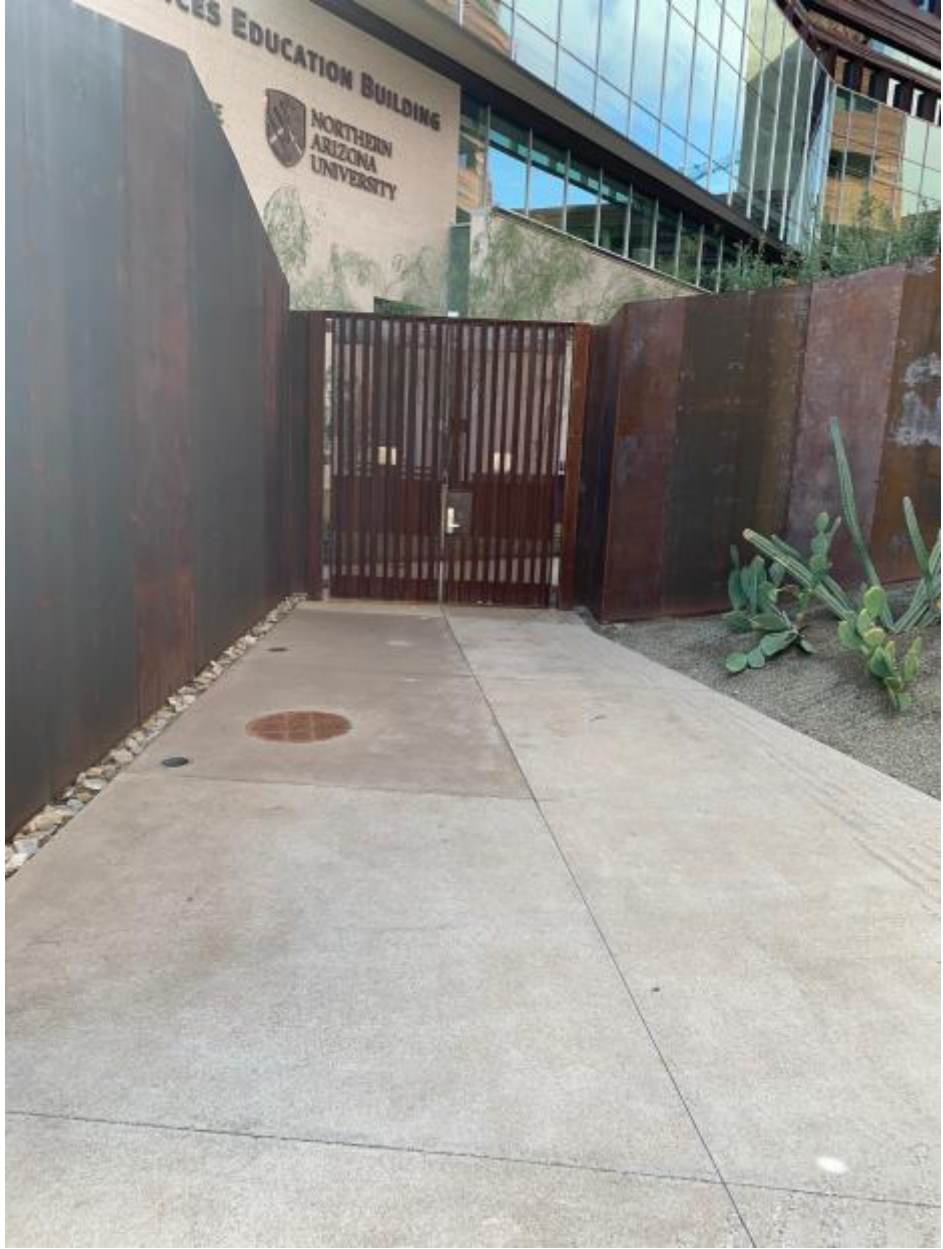
Alarm on Canyon Doors

Please note that the gate alarms for the North Canyon have been activated for both West and East sides. Gates are equipped with 120 decibel alarms and will notify security services when opened. These gates are intended for **Emergency use only**.











BSPB 3rd & 4th Floor Construction



Pardon Our Dust.....

Construction will be starting at the beginning of February on the 3rd and 4th floor shell floors in the Biomedical Sciences Partnership Building. The shell floors will be built out to accommodate additional wet lab space along with office and common areas for support of the research activities for the UArizona Health Sciences. Construction will take approximately one year with an anticipated completion in January of 2021.

Additional updates will be published as we move through the construction process. We appreciate your patience and support as we move into this next phase of the project.

Feedback

Embed://<iframe width="640px" height="480px" src="https://forms.office.com/Pages/ResponsePage.aspx?id=BVXjXo7rKUmTfWRd9QEyiJXSyrbgh1xHjATpJP4c_E9UREZSTFIJM1M1MzdCRjdXVFhGREpCSINWWi4u&embed=true" frameborder="0" marginwidth="0" marginheight="0" style="border: none; max-width:100%; max-height:100vh" allowfullscreen webkitallowfullscreen mozallowfullscreen msallowfullscreen></iframe>